

ST. ARTHUR HOMES

Gleave Close, Southsea, P04 8FP



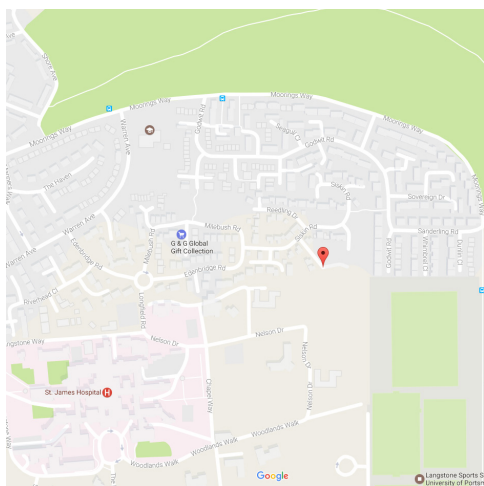
ST. ARTHUR HOMES

Gleave Close, Southsea, P04 8FP

This property benefits from:

- 3 x 3 bed semi-detached houses (plots 17, 18 & 26)
- 50% share (asking price in the region of £162,500)
- Underfloor heating to the ground floor and Central heating throughout the property.
- A+ Energy rated Appliances for the Kitchen (Fridge/Freezer, Oven, Hob and Extractor).
- Modern Bathroom with Shower over bath and Ceramic Wall Tiles.
- Carpets available subject to an additional cost.
- 2 Off-street Parking spaces.
- Sought after Location.

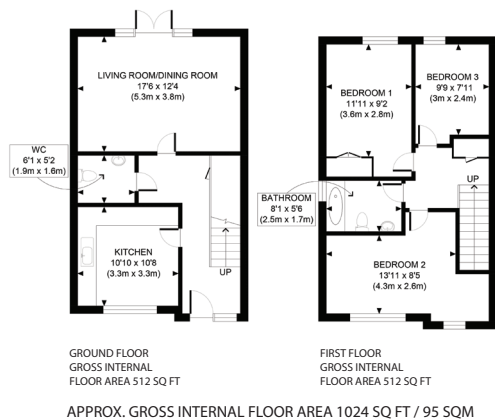
Location



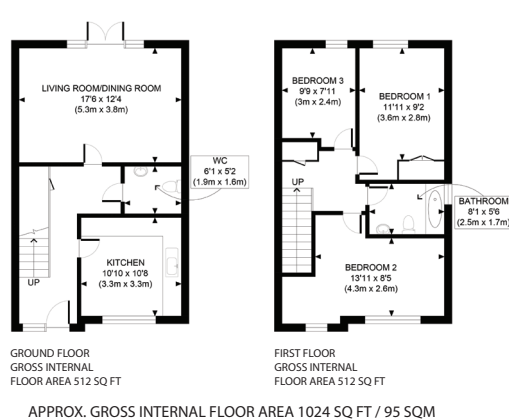
This image is a typical elevation on the development

Floor/site plan

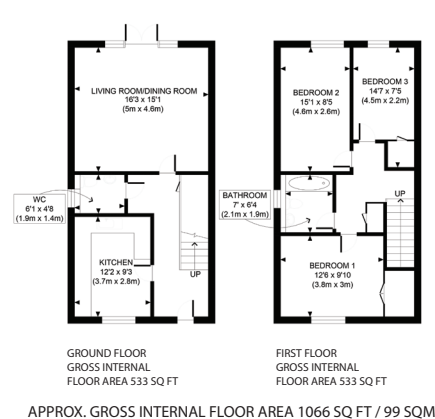
Plot 17



Plot 18



Plot 26



The information contained within these particulars is believed to be accurate but property details and specification levels may vary slightly, so all details should be checked.



Help to Buy South



ST. ARTHUR HOMES



Southampton office: 0132 955 0960
London office: 0207 224 3066